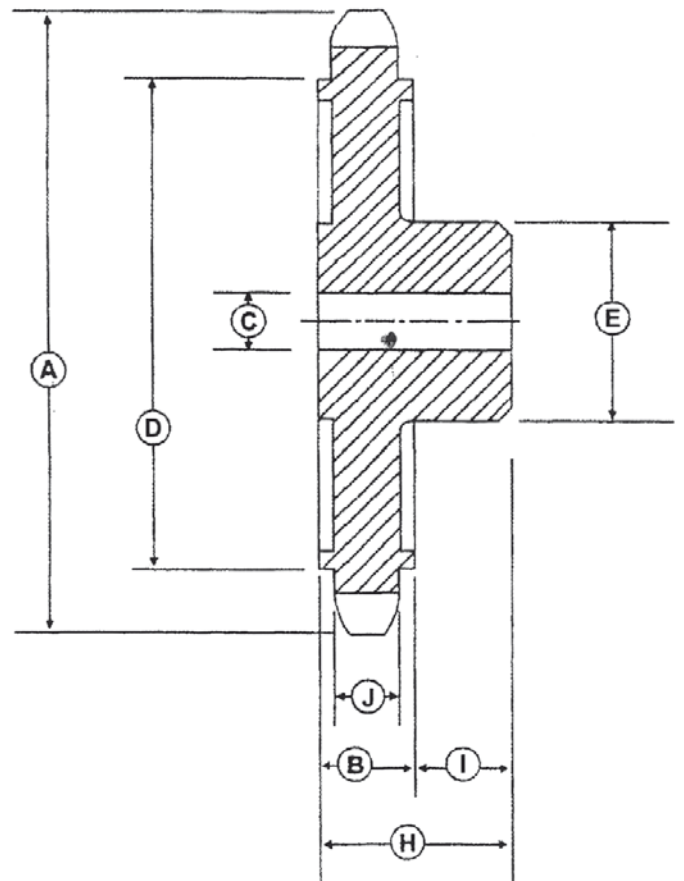


SPROCKETS CONVEYOR CHAIN



Sprockets	Weight	N°	A	B	C	D	E	H	J	A
3" - 7,500	3"	8	214			-	102	49	30	
		10	264	19.20	25.4	193	114	57	38	13.8
		12	313			243	114	57	38	
4" - 7,500	4"	8	285			204	114	57	38	
		10	346	19.20	25.4	272	114	57	38	13.8
		12	411			338	127	57	38	
4" - 15,000	4"	8	285			192	127	75	50	
		10	349	25.40	25.4	259	127	75	50	13.8
		12	415			325	140	75	50	
6" - 15,000	6"	8	417			314	140	75	50	
		10	515	25.40	25.4	415	140	75	50	17.5
		12	612			514	165	75	50	
6" - 30,000	6"	8	422			301	165	81	50	
		10	519	32.40	25.4	416	165	81	50	23
		12	617			502	196	106	75	

MATERIALS: - Cast Iron
- Steel SAE 1045