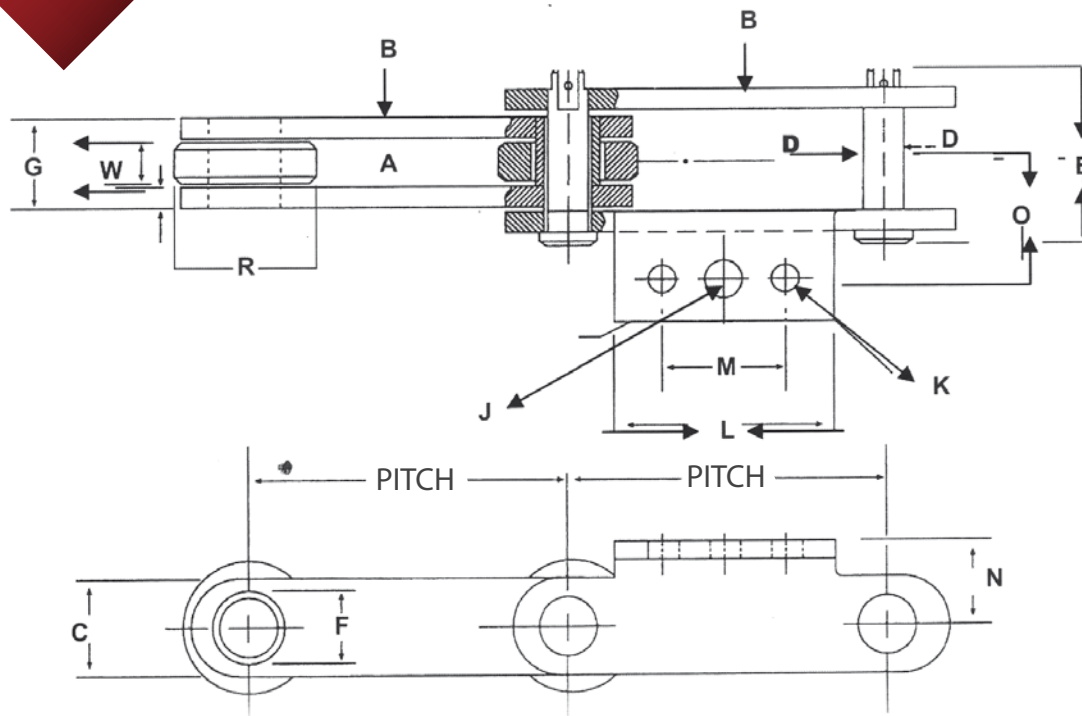


SWF UK CONVEYOR CHAIN



All measurements are in millimeters

N° Chain	Pitch	Tensile Strength lbs.	Plate			Pin			Bush			Roller			Attachments						
			Plate Spacing	Height	Width	Measures	Diameter	Length	Materials	Diameter Outer	Length	Materials	Diameter Exterior	Width	Materials	Hole Central	Hole Lateral	Width	Distance between centers	Height Vertical	Distance to center
A	B	C	D	E	F	G	R	W	J	K	L	M	N	O							
3"-7,500	76.2	25,000	15.0	4.5	28.50	CS	14.2	44.2	HS	19.00	24.0	HS	31.76	14.00	CS	10.5	10.5	56.00	31.0	21.2	38.1
4"-77,500	101.6	25,000	15.0	4.5	28.50	CS	14.2	44.2	HS	19.00	24.0	HS	31.76	14.00	CS	10.5	10.5	65.00	31.0	21.2	38.1
4"-15,000	101.6	48,000	19.1	6.00	38.10	CS	19.00	59.5	HS	25.00	31.1	HS	48.00	17.80	CS	13.90	10.5	65.00	31.80	31.00	44.4
6"-15,000	152.4	48,000	19.1	6.00	38.10	CS	19.00	59.5	HS	25.00	31.1	HS	48.00	17.80	CS	13.90	10.5	114.00	57.20	31.00	44.4
6"-30,000	152.4	56,000	25.2	7.90	50.80	CS	27.00	77.00	HS	33.50	41.0	HS	67.00	23.50	CS	13.90	10.70	110.00	57.20	41.60	54.00
6"-30,000	152.4	58,000	25.2	8.00	50.80	CS	27.00	77.00	HS	33.50	41.0	HS	67.00	23.50	CS	13.90	10.70	110.00	57.20	41.60	54.00

TYPES OF CHAIN

TYPE A: With connecting link under plate simple.

TYPE B: With connecting link under plate with attachment.

MATERIALS

HS: hardened alloy steel

CS: Carbon Steel

The bolts SWF UK chains are hardened and ground until a perfectly cylindrical diameters, with a surface finish very hard to improve the wear resistance.

SWF UK uses a process called "Ball Drifting" involves passing a ball pressure through the hole in the plate, combined with other technological processes improve the resistance to fatigue and wear.